



TITLE: 20181214-039\_A3

COLOUR CODE:

- BLACK - 38KV & HIGHER VOLTAGE OVERHEAD LINES
- GREEN - MV(10KV/20KV) OVERHEAD LINES
- BLUE - LV (400V/230V) OVERHEAD LINES
- CYAN - 38KV & HIGHER VOLTAGE UNDERGROUND CABLE ROUTES
- RED - MV/LV (10KV/20KV/400V/230V) UNDERGROUND CABLE ROUTES

DATE: 14-Dec-2018  
 \*\* SCALE: 1:700

\*\* SCALE WHEN PRINTED ON AN A3 PAGE  
 XY COORDINATES DISPLAYED IN IRISH GRID COORDINATE SYSTEM

**WARNING**

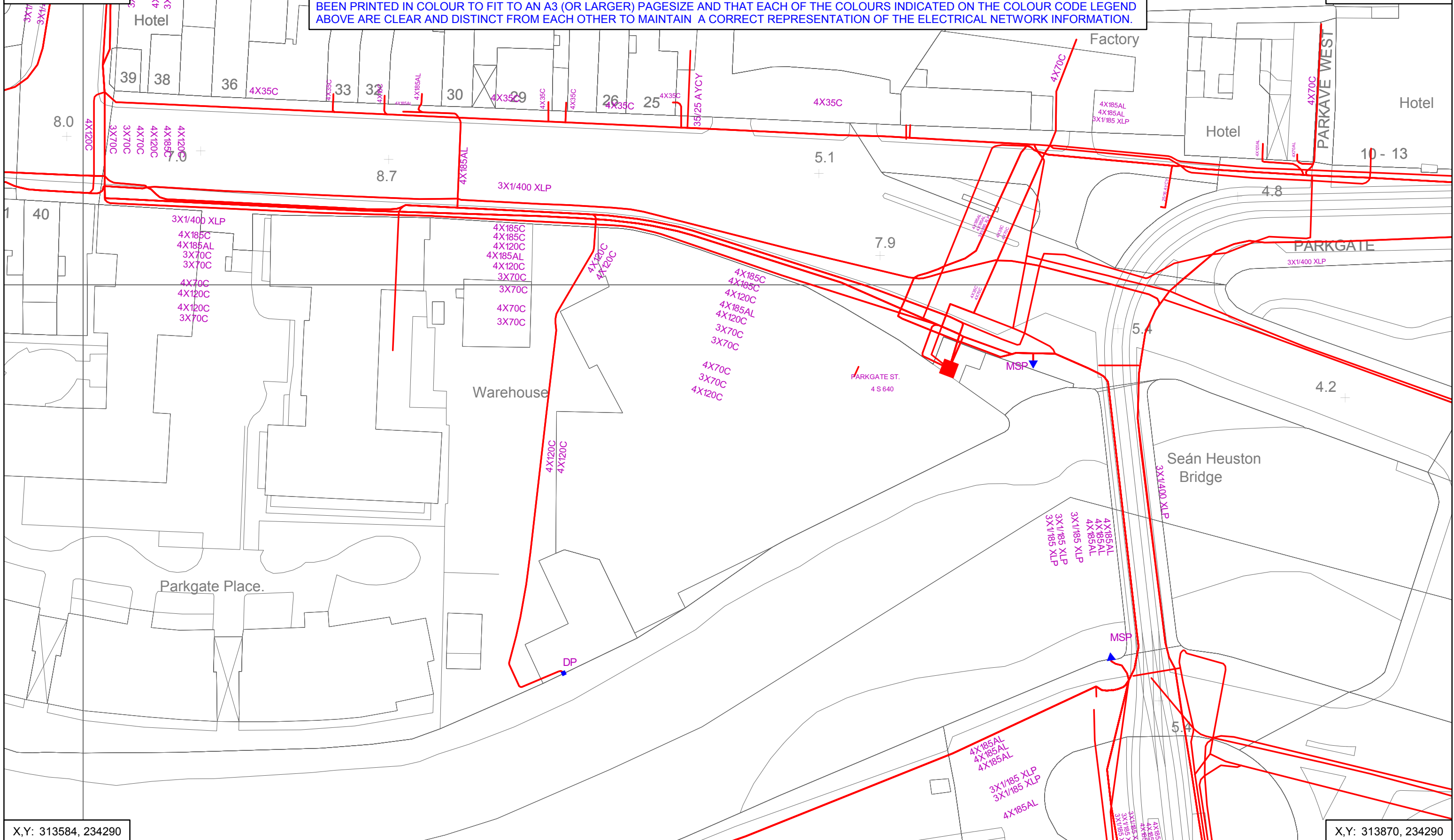
THIS MAP INDICATES THE APPROXIMATE LOCATION OF ESB TRANSMISSION (400KV, 220KV, 110KV, 38KV) AND DISTRIBUTION (20KV, 10KV, 230V/400V) UNDERGROUND CABLES AND OVERHEAD LINES IN THE GENERAL AREA OF THE PROPOSED WORKS. ESB NETWORKS TAKES NO RESPONSIBILITY FOR THE ACCURACY OR COMPLETENESS OF THE MAP. IT IS THE USER'S RESPONSIBILITY TO INDEPENDENTLY VERIFY THE INFORMATION AND THE LOCATION OF UNDERGROUND CABLES AND OVERHEAD LINES. LOW VOLTAGE (230V/400V) SERVICE CABLES (E.G. HOUSE SERVICES, FACTORY/SHOP SERVICES, PUBLIC LIGHTING LAMP SERVICES, ETC) ARE NOT INCLUDED BUT THEIR PRESENCE SHOULD BE ANTICIPATED. THE DEPTHS OF UNDERGROUND CABLES MUST NEVER BE ASSUMED. ADDITIONAL MORE DETAILED INFORMATION IS AVAILABLE FOR HIGH VOLTAGE TRANSMISSION UNDERGROUND CABLES (38KV, 110KV, 220KV, 400KV) FROM THE LOCAL ESB NETWORKS TRANSMISSION REPRESENTATIVE - SEE ATTACHED LIST FOR CONTACT DETAILS OR CALL 1850 372 757. NO WORK SHOULD BE CARRIED OUT IN THE VICINITY OF 38KV OR HIGHER VOLTAGE UNDERGROUND CABLES WITHOUT PRIOR CONSULTATION WITH ESB NETWORKS. BEFORE ANY MECHANICAL EXCAVATION IS UNDERTAKEN, THE ACTUAL LOCATION OF ALL UNDERGROUND ELECTRICITY CABLES MUST BE ESTABLISHED AND VERIFIED ON THE SITE USING: (A) UP-TO-DATE MAP RECORDS; (B) CABLE LOCATER EQUIPMENT OPERATED IN BOTH POWER AND RADIO MODES; (C) CAREFUL HAND DIGGING OF TRIAL HOLES USING 'SAFE DIGGING PRACTICE'. REFER ALSO TO 'HSA CODE OF PRACTICE FOR AVOIDING DANGER FROM UNDERGROUND SERVICES'. ESB TAKES NO RESPONSIBILITY FOR AND SHALL BEAR NO LIABILITY, HOWSOEVER ARISING, IN RELATION TO ANY DAMAGE, INJURY/DEATH OR LOSS OF SUPPLY AS A RESULT OF DAMAGE OR INTERFERENCE WITH ITS NETWORKS.

Maps reproduced by permission: Ordnance Survey Ireland Licence No. EN0023715-19, Copyright Ordnance Survey Ireland Government of Ireland

X,Y: 313584, 234460

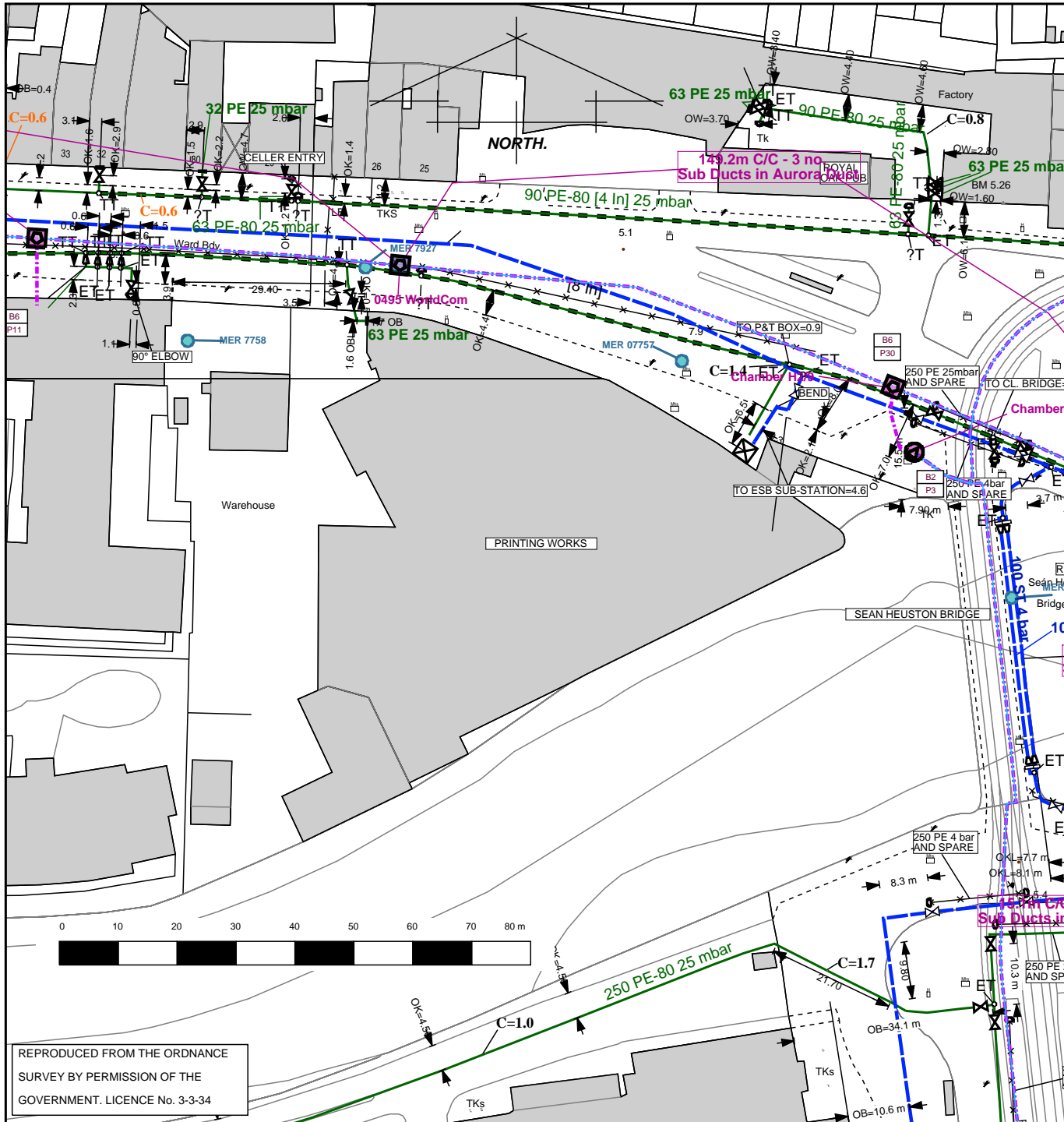
ESB NETWORKS HAS ISSUED THIS MAP AS A PDF DOCUMENT. IF VIEWING A PAPER VERSION OF THIS MAP, THE VIEWER MUST ENSURE THAT IT HAS BEEN PRINTED IN COLOUR TO FIT TO AN A3 (OR LARGER) PAGESIZE AND THAT EACH OF THE COLOURS INDICATED ON THE COLOUR CODE LEGEND ABOVE ARE CLEAR AND DISTINCT FROM EACH OTHER TO MAINTAIN A CORRECT REPRESENTATION OF THE ELECTRICAL NETWORK INFORMATION.

X,Y: 313870, 234460



X,Y: 313584, 234290

X,Y: 313870, 234290



**Important Safety Notice:**  
 Damage to gas pipelines can result in serious injury or death. Gas network information is provided as a general guide. The exact location and depth of medium or low pressure distribution gas pipes must be verified on site by carrying out necessary investigations, including, for example, hand digging trial holes along the route of the pipe.  
 Service pipes are not generally shown but their presence should always be anticipated.

High pressure transmission pipelines are shown in red. If a transmission pipeline is identified within 10m of any intended excavations then work must not proceed before GNI has been consulted. The true location and depth of a transmission pipeline must be verified on site by a representative of GNI. Contact can be made through 1850 427 747.

All work in the vicinity of the gas network must be completed in accordance with the current edition of the Health & Safety Authority publication, Code of Practice For Avoiding Danger From Underground Services, which is available from the Health and Safety Authority (1890 289 389) or can be downloaded at www.hsa.ie.

**Legal Notice:**  
 Gas Networks Ireland (GNI) and its affiliates, accept no responsibility for the accuracy of any information contained in this document including data concerning location and technical designation of the gas distribution and transmission network (the Information). The Information should not be relied on for accurate distance or depth of cover measurements.

Any representations and warranties, express or implied, are excluded to the fullest extent permitted by law. No liability shall be accepted for any loss or damage including, without limitation, direct, indirect or consequential loss, arising out of or in connection with the use or re-use of the Information.

- Aurora Telecom Fibre Optic Cable
- Aurora Telecom Duct
- Aurora Telecom Sub-duct
- Aurora Telecom Inserted Gas Pipe

Contact Aurora Telecom on 1850-427-399 or (01)203-0120.

- Transmission Pipe (High Pressure)
- Transmission Pipe (Construction Issue)
- Distribution Pipe (Medium Pressure)
- Distribution Pipe (Low Pressure)
- Service Pipe (Medium Pressure)
- Service Pipe (Low Pressure)
- Strategic Pipe (Medium Pressure)
- Strategic Pipe (Low Pressure)
- Inserted Pipe (Medium Pressure)
- Inserted Pipe (Low Pressure)
- Distribution Pipe (Abandoned)

- Cover (depth in meters)
- CP Test Point
- End Cap
- Hot Tap
- Installation
- Valve
- Mains Verification \*\*
- Pressure Monitor Protection (Sleeve)
- Protection (Slabbing)
- Reducer
- Service Terminator
- Tee
- Transition

\*\* Please contact GNI on 1850-427747 for specific information.

Design Department - CORK

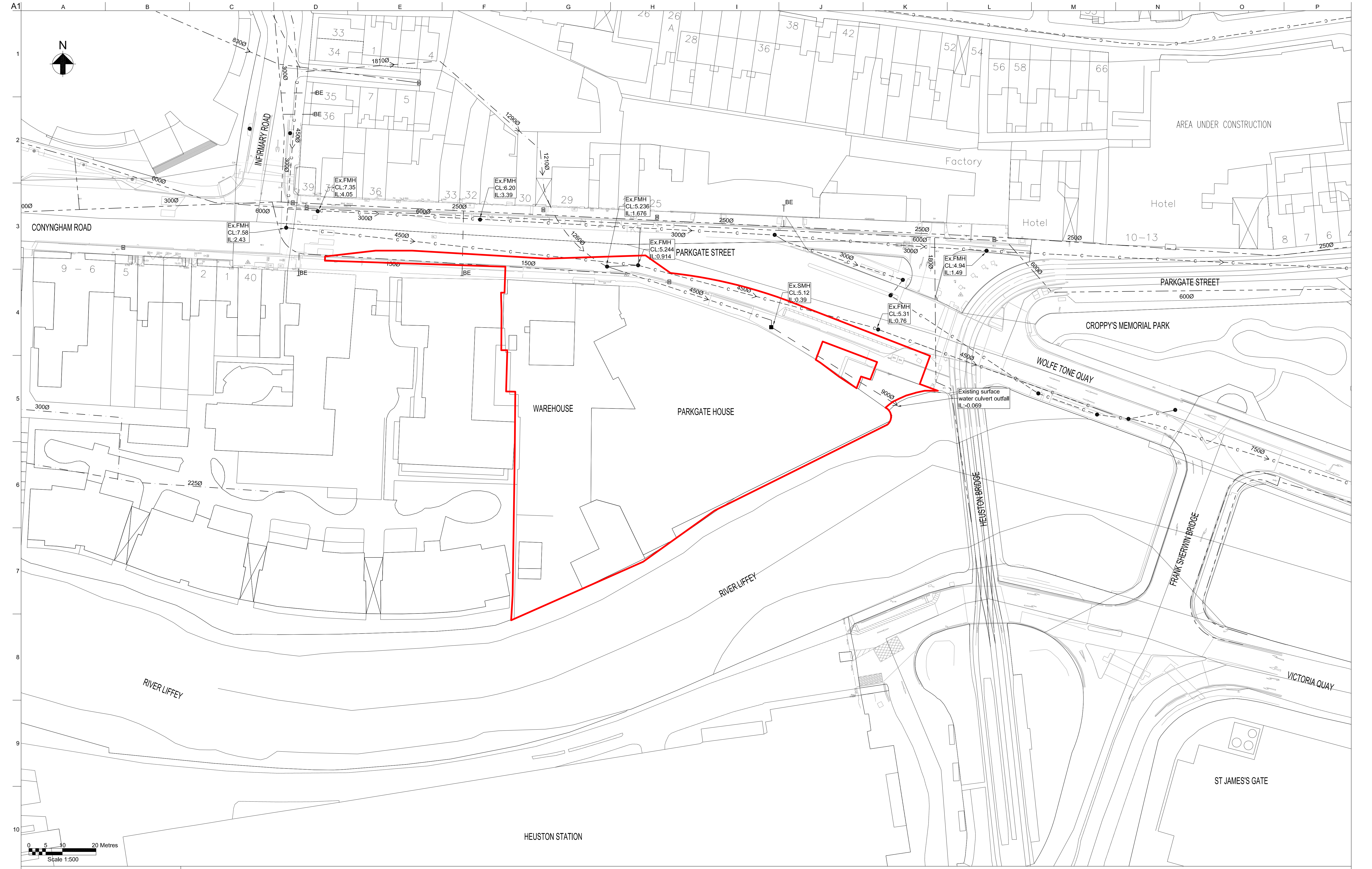


## GAS NETWORK INFORMATION

Issue:	IN2	
Location:	42A Parkgate St, Phoenix Park, D8	
Plot Date:	11/12/2018	Contact: S O' Brien
Plotted by:	KOC	Scale: 1:1000

REPRODUCED FROM THE ORDNANCE SURVEY BY PERMISSION OF THE GOVERNMENT. LICENCE No. 3-3-34





**Legend**

- Existing Watermain
- Existing Surface Sewer
- Existing Combined Sewer
- Site Boundary Line

Hydrant

Ex. SMH

Ex. FMH

P01	27/05/19	MC	AB	KD
Issued for Information				
Rev	Date	By	Chkd	Appd

ARUP

Anap, 50 Ringsend Road  
Dublin, D04 T6X0  
www.arup.ie  
Tel +353(0)1 233 4455 Fax +353(0)1 668 3169

Client  
Chartered Land

Project Title  
Parkgate Street Redevelopment

Drawing Title  
Existing Drainage and Watermain  
Site Plan Layout

Scale at A1 1:500

Role	Civil
Suitability	S2 - Suitable for Information
Arup Job No	265381-00
Name	C001
Rev	P01